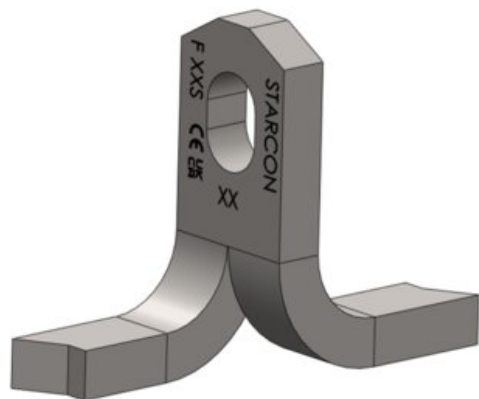


STA-F Flat Foot Anchor



Product information

The STA-F flat foot anchor is suitable for use in plates. The head of the anchor has a hole in which the locking bolt of the lifting eye is mounted. Further reinforcement is to be placed above the foot of the anchor.

The Starcon product is designed according to EN13155-2009 and follows the guidelines in VDI/BV-BS 6205 and DS/CEN/TR 15728.

Marking: CE-marked, UKCA-marked, Batch code, Load group+S (Starcon)

Finish: Hot dip galvanized

Note: The delivery time for the individual products is estimated and if the desired quantity is not in stock, please contact [CERTEX Danmark A/S – Starcon](#) for information on the applicable delivery time. Other lengths can be supplied on request.

Part Code	Load grp. t	Length mm	Finish	L mm	a mm	b mm	c mm	r mm	Weight kg	Delivery time
65012002500702	2.5	70	HDG	70	30	10	94	7	0.32	2
65012005001202	5	120	HDG	120	40	15	105	10	0.72	2
65012007501702	7.5	170	HDG	170	60	16	120	13	1.46	2

Blueprint

