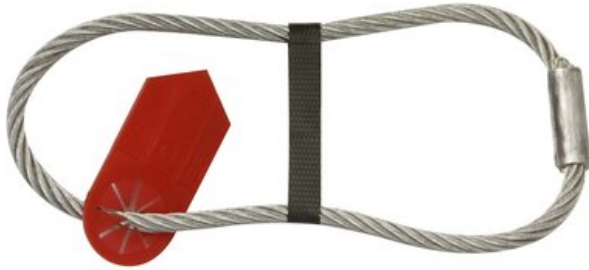


Cast-in Lifting Loop

Product information



Cast-in Lifting Loop made from endless crimped wire rope. With either plastic or steel strap (for connecting to reinforcement).

Lifting gear: The radius of the crane hook should be at least equal to the curvature of the lifting loop in order to avoid crushing of the rope.

This product complies with the requirements of the European Machinery Directive 2006/42/EC.

Material: Steel wire rope

Marking: According to standard, CE-marked

Finish: Galvanized

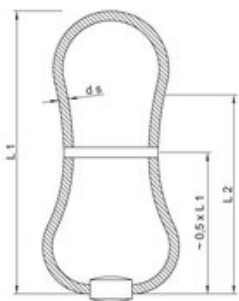
Standard: CEN/TR 15728 - VDI/BV-BS 6205

Safety factor: 3:1

Part Code	Rope Ø range mm	Rope Ø mm	L1 mm	L2 mm	Weight kg/100pc	Delivery time
6504K3608	6	6	200	140	8	100
6504K3612	7	7	220	160	11	100
6504K3616	8	8	240	170	15	100
6504K3625	10	10	300	220	28.5	100
6504K3625ST	10	10	300	220	50	100
6504K3640	12	12	350	250	28.5	100
6504K3640ST	12	12	350	250	50	100
6504K3652	14	14	370	270	80	100
6504K3663	16	16	400	290	100	100

Blueprint

with plastic strap



with steel strap

