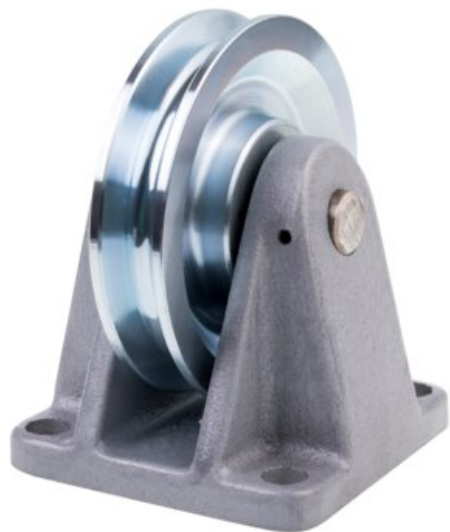


Wire Pulley Sheave, type BR



Product information

Pulley sheaves for rope deflection with plain bearing, with honed steel axle. Grooved profile turned to DIN 15061.

Material: Sheave: S355J2. Mounting plate: gray cast iron GG20.

Finish: Wire rope sheave: galvanized, mounting plate: painted.

Note: Also available with ball-bearing, for higher load.

Part Code	Rope Ø range mm	Type	Max load ton	D1 mm	D2 mm	R mm	A x B	C mm	E x F	H mm	øL	Weight kg	Delivery time
140100600130	2-6	BR 050 G	0.3	50	38	3,2	67 x 67	7	50 X 50	35	7	0.6	10
140100800130	3-8	BR 075 G	0.6	75	59	4,2	75 x 75	10	60 X 60	50	9	1.4	10
140100900130	4-9	BR 100 G	0.9	100	80	4,8	90 x 90	10	70 X 70	65	12	2.5	10
140101000130	6-10	BR 125 G	1.1	125	103	5,3	92 x 92	10	70 X 70	75	12	3.2	10
140101200130	8-12	BR 150 G	1.25	150	126	6,5	12 x 100	12	75 X 90	90	14	4.8	2

Blueprint

