

GB Instruction for use
DK Brugsanvisning



UMPRSJ20200526DK

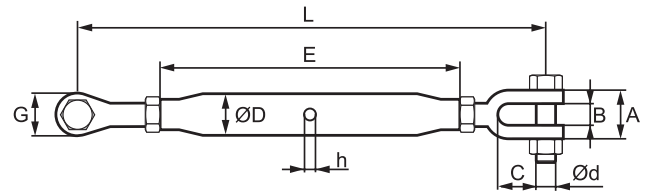
POWERTEX Rigging Screw model PRSJ Welded



POWERTEX Closed Body Rigging Screw Instruction for use (GB) (Original instructions)



- Failure to follow the regulations of this mounting instruction may cause serious consequences such as risk of injury.
- Read and understand these instructions before use.



Thread	WLL tons	A	B	C	D	E	G	d	h	L		Weight kg
										min	max	
M10	0,5	20	10	16	17,2	150	18	M8	7	225	335	0,3
M12	0,7	25	13	25	21,3	195	24	M10	8	315	470	0,65
M16	1,2	34	18	38	27	230	31	M12	8	380	565	1,25
M20	1,5	36	20	42	34	270	39	M16	12	450	660	2,2

General: For tightening of ropes, cables and the like. With locking nuts. Split pin stainless AISI 304.

All rigging screws are individual tested and numbered.

Stamping: POWERTEX, WLL xxT, batch number.

Pinbolt: Hot dip galvanized + Blue painted RAL5017.

Nut on bolt: Hot dip galvanized + Red painted RAL 3018.

Quality/Grade: 4.6

Finish: Hot dip galvanized (M6 and M8 electro galvanized).

Safety factor: 4:1.

1. EC Declaration of conformance is required and report of thorough examination.
2. Before use each rigging screw should be inspected to ensure that:
 - all markings in the product are readable and in compliance with the relevant documentation.
 - The components are assembled in correct way.
 - Body and end terminals shall not be distorted or unduly worn.
 - Body and terminals are free from nicks, cracks, grooves and corrosion.
 If there is any doubt with regards to the above criteria being met, the rigging screw should not be used.

3. It is important to ensure that the terminals are safely locked, before putting load on it.

All threads in the ends of the body must be fully engaged with the terminal threads, and safety locked with the stop nuts.

4. Turnbuckles should be fitted to the load in a manner that allows the turnbuckle to take the load in a true line along its centerline to avoid bending stresses which will reduce the load capacity of the turnbuckle. To avoid eccentric loading of the terminal it is recommended to distribute the load as much as possible over the total length of the pin or to use loose spacers.

5. Temperature range: -20°C - +200°C.

6. Never modify the fittings eg. to reduce the inside width of a terminal by pressing on the side eyes or welding washers / spacers to the inside of the eyes. Such action makes the declaration of conformance invalid.

7. **For lifting!** Do not adjust the length under load.

End of use/Disposal

Powertex turnbuckles shall always be sorted / scrapped as general steel scrap.

Main material is C15, and hot dip galvanized. Split is AISI 304. Certex will assist you with the disposal, if required.

Must be inspected at least once a month and must undergo a complete overhaul at least every 12 months. Please note local rules and regulations must be complied with regards to inspection.

Disclaimer

We reserve the right to modify product design, materials, specifications or instructions without prior notice and without obligation to others.

If the product is modified in any way, or if it is combined with a non-compatible product/component, we take no responsibility for the consequences in regard to the safety of the product.

Declaration of conformity
SCM Citra OY
Juvan Teollisuuskatu 25 C
FI-02920 Espoo
Finland
www.powertex-products.com

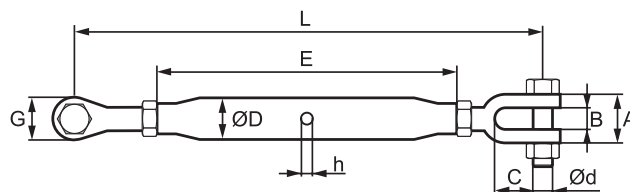
hereby declares that Powertex product as described above is in compliance with EC Machinery Directive 2006/42/EC and amendments.

POWERTEX Vantskruer

Brugsanvisning (DK)



- Manglende overholdelse af reglerne i denne brugs- og monteringsvejledning kan forårsage alvorlige konsekvenser, såsom risiko for skader.
- Læs og forstå disse instruktioner før brug.



Gevind	WLL	A	B	C	D	E	G	d	h	L		Vægt
										min	max	
	tons	mm										kg
M10	0,5	20	10	16	17,2	150	18	M8	7	225	335	0,3
M12	0,7	25	13	25	21,3	195	24	M10	8	315	470	0,65
M16	1,2	34	18	38	27	230	31	M12	8	380	565	1,25
M20	1,5	36	20	42	34	270	39	M16	12	450	660	2,2

Generelt: Til stramning af tovværk, kabler og lignende. Med låsemøtrikker. Split i rustfri AISI 304.

Alle vantskruer er individuelt testet og nummereret.

Mærkning: POWERTEX, WLL xxT, batchnummer*.

Pinbolt: Varmgalvaniseret + Blå malet RAL5017.

Møtrik på bolt: Varmgalvaniseret + Rødmalet RAL 3018.

Kvalitet/Klasse: 4.6.

Overflade: Varmgalvaniseret (M6 og M8 elektrogalvaniseret).

Sikkerhedsfaktor: 4:1.

1. Vantskruer er kun tilladt til løft når den er stemplet med unikt ID nr. CE mærke og når der foreligger gyldigt certifikat hos brugeren.

2. Før brug skal vantskruen nøje efterses for konstatering af:

- Tydelig og læsbar mærkning af at produktet er i overensstemmelse med certifikatet (ved løft).
- At alle dele er monteret korrekt i vantskruen.
- Rør og endestykker må ikke være deforme eller med slitage.
- Rør og endestykker skal være fri for sprækker, hakker, fordybninger eller korrosion.

Er der tvivl om, at nogle af ovennævnte krav ikke opfyldes, må vantskruen ikke benyttes.

3. Ved montering af vantskruen skal man sikre sig at endestykkerne låses sikkert.

Alle gevind for enden af kroppen skal være i fuldstændig kontakt med gevindene i endestykket og sikret med låsemøtrikker.

4. For at undgå usymmetrisk belastning af vantskruerne, anbefales det, at belastningen fordeles over mest muligt af boltens længde. Hvis dette ikke er muligt, bør man sørge for at punktbelastninger centrerer midt på boltens, f.eks. ved at benytte afstandsstykker.

5. Temperaturområde: -20°C - +200°C.

6. Man må aldrig presse åbningerne sammen eller svejse noget fast på boltens for at styre lasten – certifikatet bliver derved ugyldigt.

7. **Ved løft!** Må ikke længde justeres under belastning.

Kassation/bortskaffelse

Powertex vantskruer skal altid sorteres/skrottes som almindelig stålskrot.

Hovedmateriale er C15, og varmgalvaniseret. Split er AISI 304.

Cortex vil hjælpe dig med bortskaffelse, hvis det kræves.

Skal efterses mindst en gang om måneden, og skal gennemgå et hovedeftersyn mindst hver 12. måned. Bemærk venligst lokale regler og regulativer skal overholdes med hensyn til inspektion.

Ansvarsfraskrivelse

Vi forbeholder os retten til at modificere produktdesign, materialer, specifikationer eller anvisninger uden forudgående varsel og uden forpligtelse over for andre.

Hvis produktet modificeres på nogen måde, eller hvis det kombineres med et ikke-kompatibelt produkt/komponent, påtager vi os intet ansvar for konsekvenserne hvad angår produktets sikkerhed.

Overensstemmelseserklæring

SCM Citra OY
 Juvan Teollisuuskatu 25 C
 FI-02920 Espoo
 Finland
www.powertex-products.com

erklærer hermed, at Powertex produktet, som beskrevet herover, er i overensstemmelse med EF-maskindirektiv 2006/42/EF og senere ændringer.

CertMax+

The CertMax+ system is a unique leading edge certification management system which is ideal for managing a single asset or large equipment portfolio across multiple sites. Designed by the Lifting Solutions Group, to deliver optimum asset integrity, quality assurance and traceability, the system also improves safety and risk management levels.

CertMax

User Manuals

You can always find the valid and updated User Manuals on the web. The manual is updated continuously and valid only in the latest version.

NB! The English version is the Original instruction.

The manual is available as a download under the following link:
www.powertex-products.com/manuals



POWERTEX



The Lifting KnowHow



www.powertex-products.com